



# Student Accommodation for New School in Langdon

Oct. 17, 2023

## Land Acknowledgment

Rocky View Schools would like to acknowledge the land and recognize all the Indigenous Peoples whose footprints have marked these lands from time immemorial. Together, we can learn and honour the Ways of Knowing of Indigenous Peoples for all future generations.

# Agenda

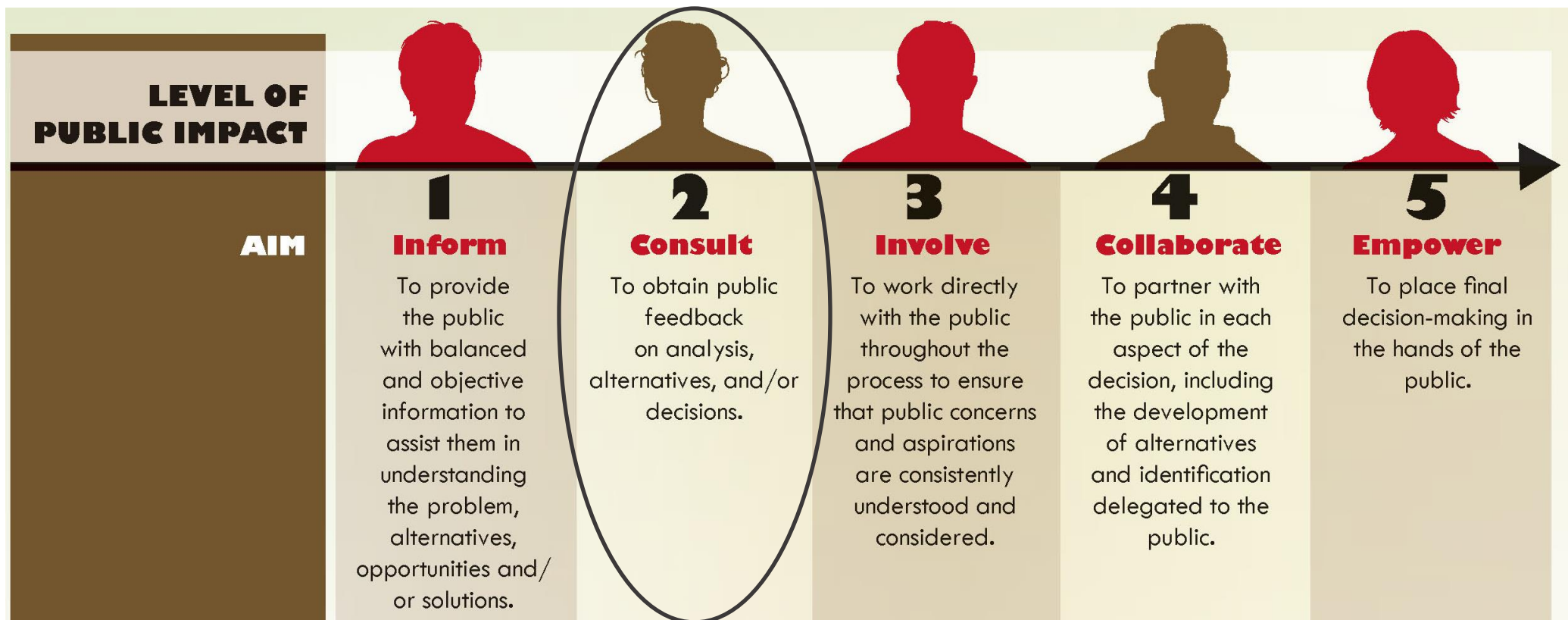
- Welcome and Introductions
- Engagement Process
- Proposed Accommodation Options
- Next Steps
- Closing
- Classroom Chat

# Engagement Process

## Roles of:

- The public
- RVS administration
- School administrators
- Trustees

# Level of Public Consultation

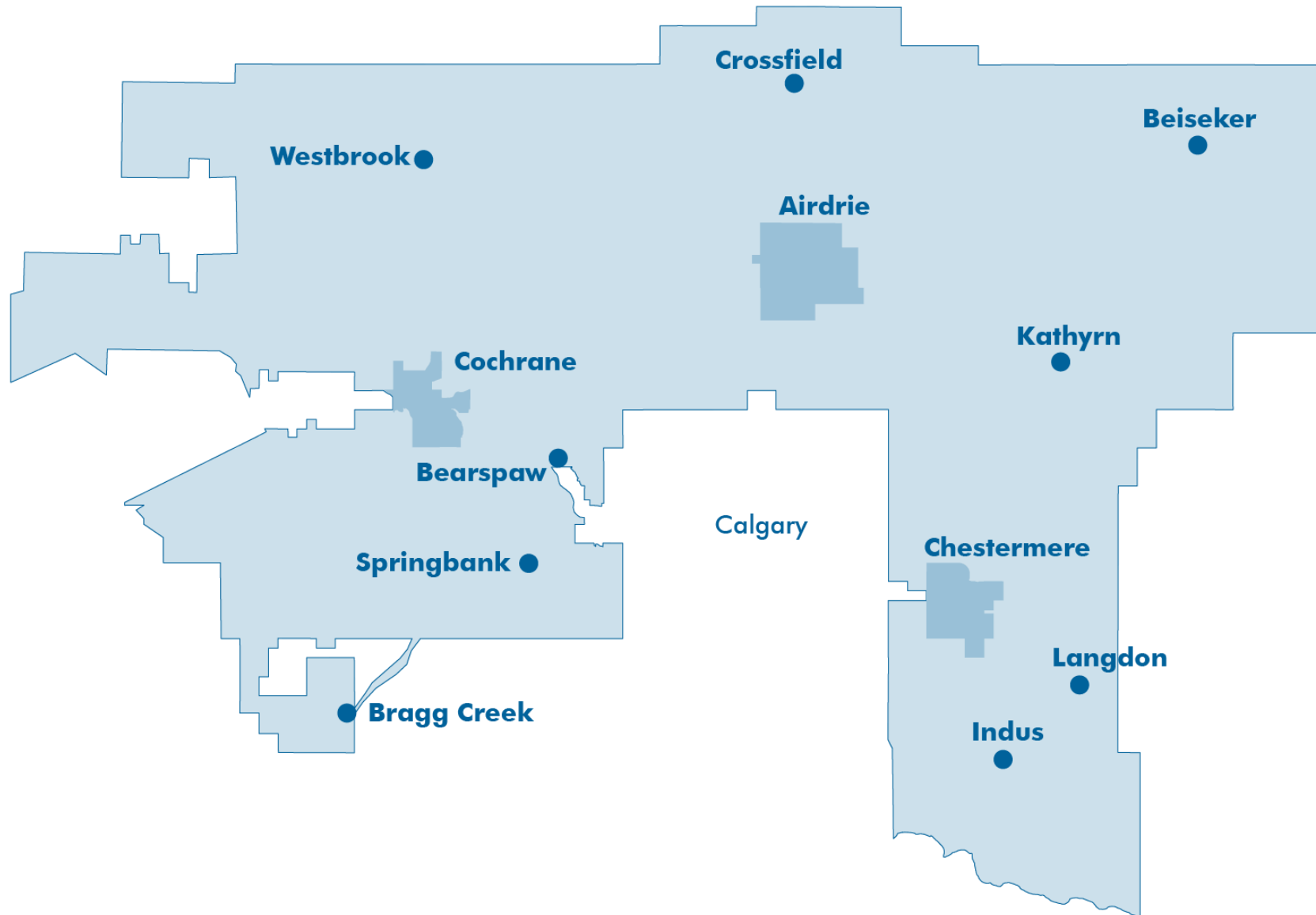


*International Association for Public Participation (IAP2) Spectrum of Participation*

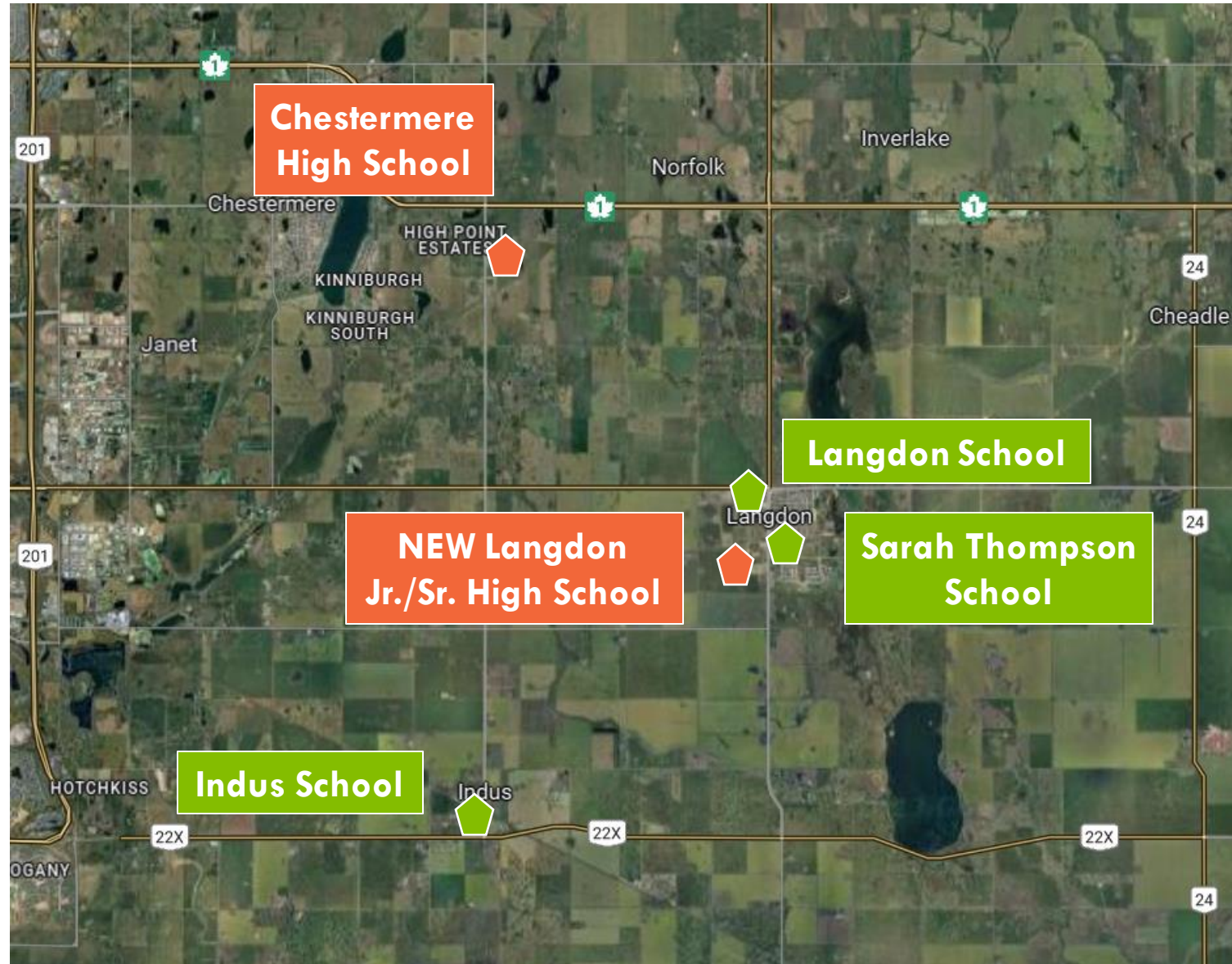
# Ground Rules for Public Engagement

- Use respectful language
- Allow equal voice
- Be mindful of time
- Respect other people, their ideas and opinions
- Role of the facilitator

# Rocky View Schools



# Schools



# Langdon Schools



# Langdon Development

## Painted Sky

Total Units 1,133  
Anticipated Population  
3,512

## Bridges of Langdon

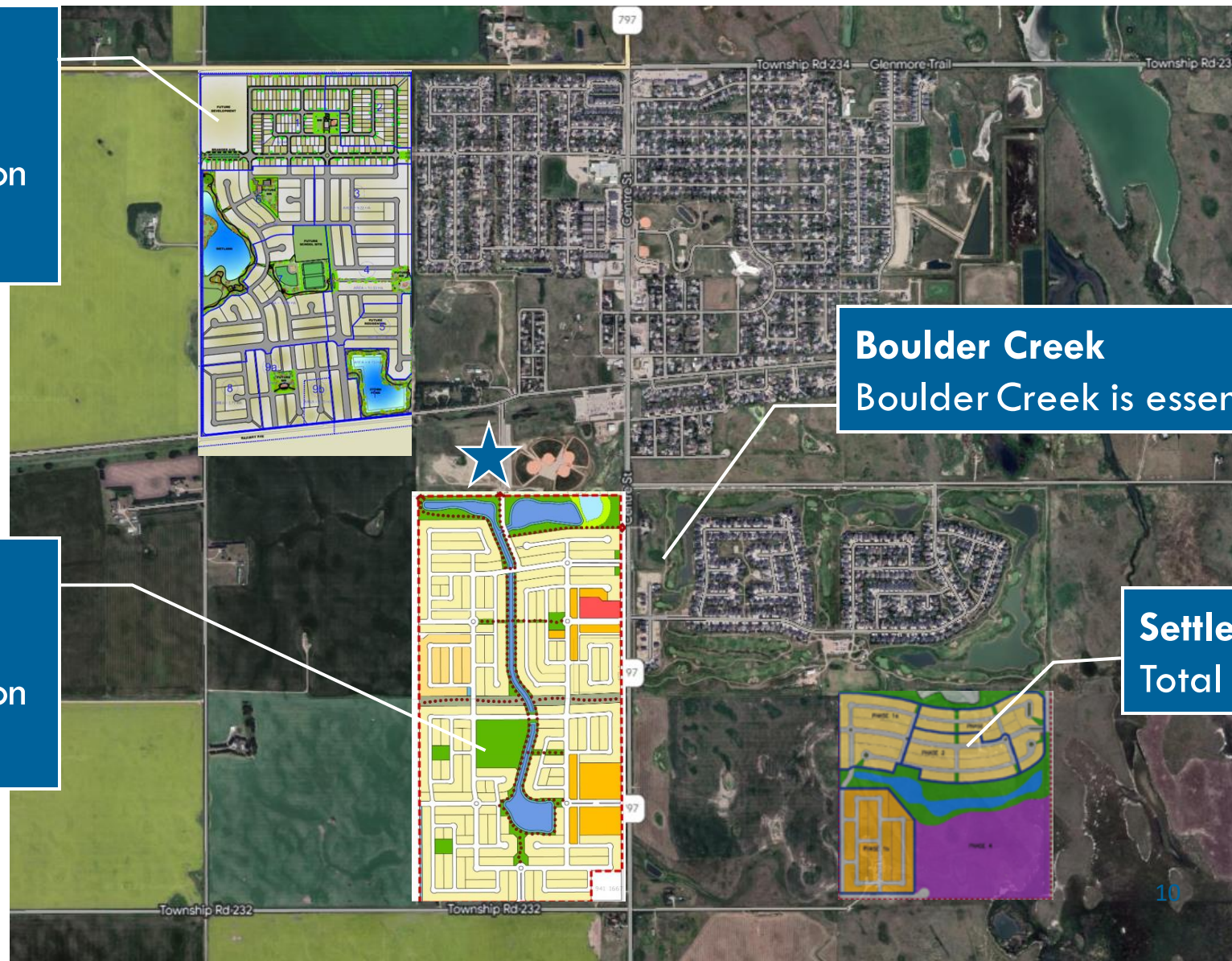
Total Units 1,307  
Anticipated Population  
3,920

## Boulder Creek

Boulder Creek is essentially complete.

## Settler's Green

Total Units 360 units





# Student Accommodation



# May Proposal for Feedback

New school in Langdon to be a Grade 7 – 12 school.

School	Current Grade Structure	Proposed Grade Structure (Sept 2024)
Sarah Thompson	K – Gr. 5	K – Gr. 6
Langdon School	K – Gr. 9	K – Gr. 6
Indus School	K – Gr. 9	K – Gr. 6

# What We Heard From May feedback

- Excitement about having a new school in the community
- Many positive comments about the school design, specialty spaces, aesthetics, and future potential of connecting to a community centre
- Discomfort with Grade 7s in the same school as Grade 12 students (safety, bullying, too young, etc.)
- Underutilization of existing schools if grade configurations change and waste of investments in those schools (Indus School renovations for example)
- Comments asking to keep Indus School grade configuration the same

# What We Heard From May Feedback – Continued

- Suggestions to move French Immersion and the Christian program to the new school and alleviate pressure in Chestermere Lake Middle School
- Suggestions to make Sarah Thompson K – Gr. 6, Langdon School Gr. 7 – 9 and new school Gr. 10 – 12
- Suggestions to make all elementary schools K – Gr. 6
- Concerns with new school population being too small for sports teams
- Support for new school grade configurations to be Gr. 9 – 12 or 10 – 12 and to gradually increase the grades (first year Gr. 9 – 11)
- Concerns with students needing to change schools multiple times (fewer changes were felt to be better)

# Factors Considered in Creating New Options

- Maximize student opportunities and make the best use of spaces/facilities for student learning
- Consider options that minimize change for students and keep student groups together
- Heard parents/guardians' concerns with younger students in the same building with older students. There are ways of supporting all grades together successfully. It remains an option given the capacity of the new building
- Moving programs of choice outside of Chestermere would result in some students leaving these programs and put at risk the viability of those programs
- Starting to lose some families who are returning to Calgary schools that are opening

# Three Options For Feedback

Three options are being considered from initial feedback – a slightly revised option from the original proposal and two new options

Impacted Schools	Current Grade Structure	Option A Proposed Grade Structure	Option B Proposed Grade Structure	Option C Proposed Grade Structure
Sarah Thompson	K – Gr. 5	K – Gr. 6	K – Gr. 5	K – Gr. 3
Langdon School	K – Gr. 9	K – Gr. 6	K – Gr. 8	Gr. 4 – 8
Indus School	K – Gr. 9	K – Gr. 6	K – Gr. 8	K – Gr. 8
New School	N/A	Gr. 7 – 12 <i>Will open as Gr. 7 – 11</i>	Gr. 9 – 12 <i>Will open as Gr. 9 – 11</i>	Gr. 9 – 12 <i>Will open as Gr. 9 – 11</i>



# Option A



# Option A

New School opening as Gr. 7 – 11 Sept. 2024 and  
Gr. 7 – 12 in Sept. 2025

School	Current Grade Structure	Proposed Grade Structure (Sept 2024)
Sarah Thompson	K – Gr. 5	K – Gr. 6
Langdon School	K – Gr. 9	K – Gr. 6
Indus School	K – Gr. 9	K – Gr. 6

# Option A

- New school will have 1,004 student spaces on opening day
- Expecting about 100 – 125 students/grade to attend the new school
- Grow the program, starting with Gr. 7 – 11 students in Sept. 2024

School Year	Grade Structure	Student Population	Utilization Rate
2024/25	Gr. 7 – 11	558	56%
2025/26	Gr. 7 – 12	691	69%
2026/27	Gr. 7 – 12	732	73%
2027/28	Gr. 7 – 12	738	74%

# Option A

Chestermere High School remains Gr. 10 – 12

School Year	Gr. 10	Gr. 11	Gr. 12	Total	Capacity	Utilization Rate
2022/23	365	347	269	981	1,026	96%
2023/24	409	362	334	1,105	1,046	108%
2024/25	295	308	366	969	1,046	93%
2025/26	296	298	311	905	1,046	87%
2026/27	313	299	301	913	1,046	87%
2027/28	342	316	302	960	1,046	92%

New School  
in Langdon  
Opens

# Option A

## Sarah Thompson School becomes K – Gr. 6

School Year	Student Population (K@FTE)	Capacity	Utilization Rate
2022/23	322 (K – Gr. 5)	409	79%
2023/24	306 (K – Gr. 5)	409	75%
2024/25	369 (K – Gr. 6)	409	90%
2025/26	373 (K – Gr. 6)	409	91%
2026/27	358 (K – Gr. 6)	409	88%
2027/28	363 (K – Gr. 6)	409	89%

New School in Langdon Opens

# Option A

## Langdon School becomes K – Gr. 6

School Year	Student Population (K@FTE)	Capacity	Utilization Rate
2022/23	555 (K – Gr. 9)	694	79%
2023/24	530 (K – Gr. 9)	694	76%
2024/25*	189 (K – Gr. 6)	536	35%
2025/26	195 (K – Gr. 6)	536	36%
2026/27	207 (K – Gr. 6)	536	39%
2027/28	222 (K – Gr. 6)	536	41%

New School in Langdon Opens

\* Will likely remove eight modulars given the projected population with the new grade configuration. These modulars are desperately needed elsewhere in RVS for schools well over 100% utilization.

# Option A

## Indus School becomes K – Gr. 6

School Year	Student Population (K@FTE)	Capacity	Utilization Rate
2022/23	187 (K – Gr. 9)	284	66%
2023/24	170.5 (K – Gr. 9)	284	60%
2024/25*	114 (K – Gr. 6)	198	58%
2025/26	108 (K – Gr. 6)	198	55%
2026/27	101 (K – Gr. 6)	198	51%
2027/28	103 (K – Gr. 6)	198	52%

New School in Langdon Opens

\* Will likely remove four modulars given the projected population with the new grade configuration. These modulars are desperately needed elsewhere in RVS for schools well over 100% utilization.

# Option A: Realities

- Common grade configuration across the region
- Modularity will likely be taken off select schools and repurposed to areas desperate for space
- Of the options under consideration, best utilizes the new school which should give a larger number of specialist teachers to support students
- Langdon School has most of the growth areas assigned to it and will have room to accept these new students but will drop substantially to start
- Continue to have space for some Langdon families to choose to go to Indus School



# Option B



# Option B

Opens as Gr. 9 – 11 Sept. 2024 and Gr. 9 – 12 in Sept. 2025

School	Current Grade Structure	Proposed Grade Structure (Sept 2024)
Sarah Thompson	K – Gr. 5	K – Gr. 5
Langdon School	K – Gr. 9	K – Gr. 8
Indus School	K – Gr. 9	K – Gr. 8

# Option B

- New school will have 1,004 student spaces on opening day
- Expecting about 100 – 125 students/grade to attend the new school
- Grow the program, starting with Gr. 9 – 11 students in Sept. 2024

School Year	Grade Structure	Student Population	Utilization
2024/25	Gr. 9 – 11	320	32%
2025/26	Gr. 9 – 12	430	43%
2026/27	Gr. 9 – 12	435	43%
2027/28	Gr. 9 – 12	440	44%

# Option B

Chestermere High School remains Gr. 10 – 12

School Year	Gr. 10	Gr. 11	Gr. 12	Total	Capacity	Utilization Rate
2022/23	365	347	269	981	1,026	96%
2023/24	409	362	334	1,105	1,046	108%
2024/25	295	308	366	969	1,046	93%
2025/26	296	298	311	905	1,046	87%
2026/27	313	299	301	913	1,046	87%
2027/28	342	316	302	960	1,046	92%

New School  
in Langdon  
Opens

# Option B

Sarah Thompson School remains K – Gr. 5

School Year	Student Population (K@FTE)	Capacity	Utilization Rate
2022/23	325 (K – Gr. 5)	409	79%
2023/24	306 (K – Gr. 5)	409	75%
2024/25	312 (K – Gr. 5)	409	76%
2025/26	301 (K – Gr. 5)	409	74%
2026/27	304 (K – Gr. 5)	409	74%
2027/28	298 (K – Gr. 5)	409	73%

New School in Langdon Opens

# Option B

## Langdon School becomes K – Gr. 8

School Year	Student Population (K@FTE)	Capacity	Utilization Rate
2022/23	555 (K – Gr. 9)	694	79%
2023/24	530 (K – Gr. 9)	694	76%
2024/25*	394 (K – Gr. 8)	536	74%
2025/26	399 (K – Gr. 8)	536	74%
2026/27	410 (K – Gr. 8)	536	76%
2027/28	431 (K – Gr. 8)	536	80%

New School in Langdon Opens

\* Will likely remove eight modulars given the projected population with the new grade configuration. These modulars are desperately needed elsewhere in RVS for schools well over 100% utilization.

# Option B

## Indus School becomes K – Gr. 8

School Year	Student Population (K@FTE)	Capacity	Utilization Rate
2022/23	187 (K – Gr. 9)	284	66%
2023/24	170.5 (K – Gr. 9)	284	60%
2024/25*	150 (K – Gr. 8)	198	75%
2025/26	141 (K – Gr. 8)	198	71%
2026/27	140 (K – Gr. 8)	198	71%
2027/28	136 (K – Gr. 8)	198	69%

New School in Langdon Opens

\* Will likely remove four modulars given the projected population with the new grade configuration. These modulars are desperately needed elsewhere in RVS for schools well over 100% utilization.

# Option B: Realities

- Least grade configuration changes across region with only Langdon School and Indus School reducing one grade each
- Frees up same number of modulars as option A to be repurposed to areas desperate for space
- Langdon School has most of the growth areas assigned to it and even with eight modulars removed has space to service growing neighbourhoods
- New school is very underutilized (same as option C) which will result in less options for the high school students
- Continue to have space for some Langdon families to choose to go to Indus School



**Option C**

# Option C

- New School opens as Gr. 9 – 11 Sept. 2024 and Gr. 9 – 12 in Sept. 2025
- All Kindergarten to Gr. 3 students outside of Indus area will now go to Sarah Thompson School
- All Gr. 4 to 8 students outside of Indus area will now go to Langdon School

School	Current Grade Structure	Proposed Grade Structure (Sept 2024)
Sarah Thompson	K – Gr. 5	K – Gr. 3
Langdon School	K – Gr. 9	Gr. 4 – 8
Indus School	K – Gr. 9	K – Gr. 8

# Option C

- New school will have 1,004 student spaces on opening day
- Expecting about 100 – 125 students/grade to attend the new school
- Grow the program, starting with Gr. 9 – 11 students in Sept. 2024

School Year	Grade Structure	Student Population	Utilization
2024/25	Gr. 9 – 11	320	32%
2025/26	Gr. 9 – 12	430	43%
2026/27	Gr. 9 – 12	435	43%
2027/28	Gr. 9 – 12	440	44%

# Option C

Chestermere High School remains Gr. 10 – 12

School Year	Gr. 10	Gr. 11	Gr. 12	Total	Capacity	Utilization Rate
2022/23	365	347	269	981	1,026	96%
2023/24	409	362	334	1,105	1,046	108%
2024/25	295	308	366	969	1,046	93%
2025/26	296	298	311	905	1,046	87%
2026/27	313	299	301	913	1,046	87%
2027/28	342	316	302	960	1,046	92%

New School  
in Langdon  
Opens

# Option C

## Sarah Thompson School becomes K – Gr. 3

School Year	Student Population (K@FTE)	Capacity	Utilization Rate
2022/23	322 (K – Gr. 5)	409	79%
2023/24	306 (K – Gr. 5)	409	75%
2024/25	284 (K – Gr. 3)	409	69%
2025/26	286 (K – Gr. 3)	409	70%
2026/27	301 (K – Gr. 3)	409	74%
2027/28	329 (K – Gr. 3)	409	80%

New School in Langdon Opens

# Option C

## Langdon School becomes Gr. 4 – 8

School Year	Student Population (K@FTE)	Capacity	Utilization Rate
2022/23	558 (K – Gr. 9)	694	80%
2023/24	530 (K – Gr. 9)	694	76%
2024/25*	480 (Gr. 4 – 8)	517	93%
2025/26	494 (Gr. 4 – 8)	517	96%
2026/27	483 (Gr. 4 – 8)	517	93%
2027/28	484 (Gr. 4 – 8)	517	94%

New School in Langdon Opens

\* Will likely remove eight modulars given the projected population with the new grade configuration. These modulars are desperately needed elsewhere in RVS for schools well over 100% utilization.

# Option C

## Indus School becomes K – Gr. 8

School Year	Student Population (K@FTE)	Capacity	Utilization Rate
2022/23	187 (K – Gr. 9)	284	66%
2023/24	170.5 (K – Gr. 9)	284	60%
2024/25*	150 (K – Gr. 8)	198	75%
2025/26	141 (K – Gr. 8)	198	71%
2026/27	140 (K – Gr. 8)	198	71%
2027/28	136 (K – Gr. 8)	198	69%

New School in Langdon Opens

\* Will likely remove four modulars given the projected population with the new grade configuration. These modulars are desperately needed elsewhere in RVS for schools well over 100% utilization.

# Option C Realities

- All students throughout the Hamlet of Langdon will go to the same school for the same grade
- No option for students in K – Gr. 8 to choose another school within Langdon (but they could go to Indus)
- Frees up same number of modulars as option A to be repurposed to areas desperate for space
- Growth areas are assigned to both Sarah Thompson and Langdon School and we could re-add more modulars over the years
- New school is very underutilized (same as option B) which will result in less options for the high school students
- Continue to have space for some Langdon families to choose to go to Indus School

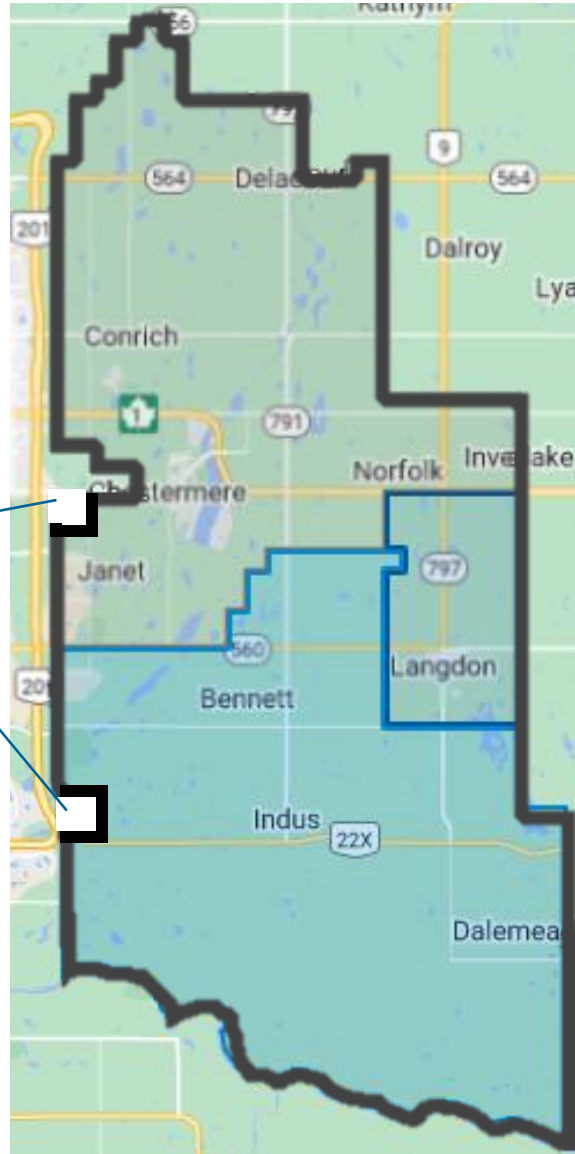


# Attendance Area Changes



# Attendance Area Changes

## Current Boundaries



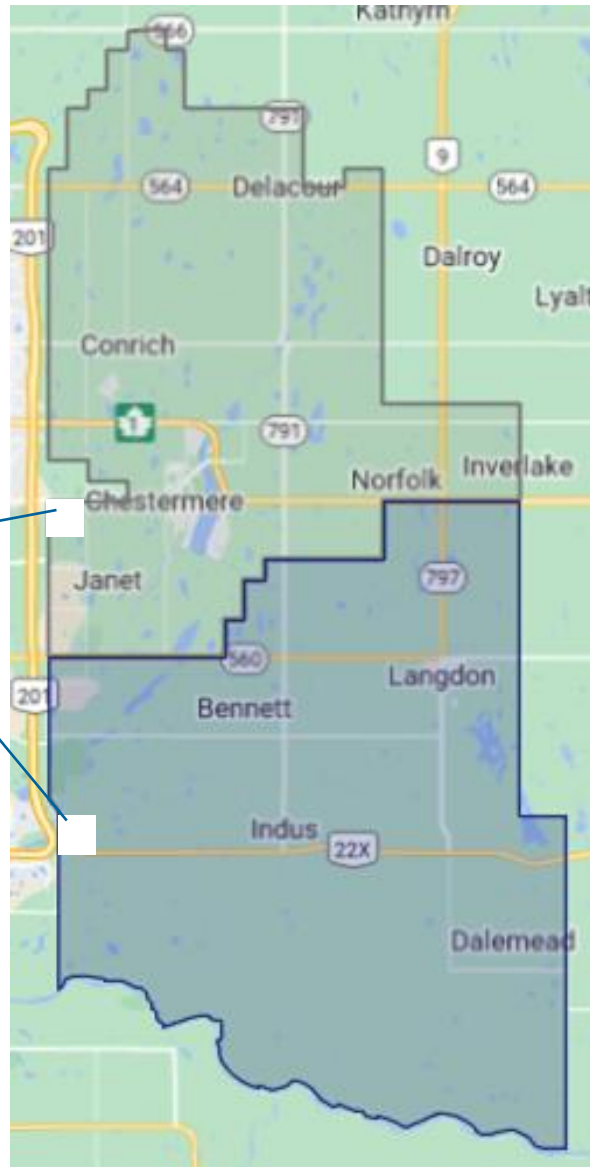
Area now designated to the Calgary Board of Education

- Chestermere High School
- Chestermere Lake Middle School
- Langdon School
- Indus School

# Attendance Area Changes

## Chestermere High School and new Langdon School Proposed Boundaries

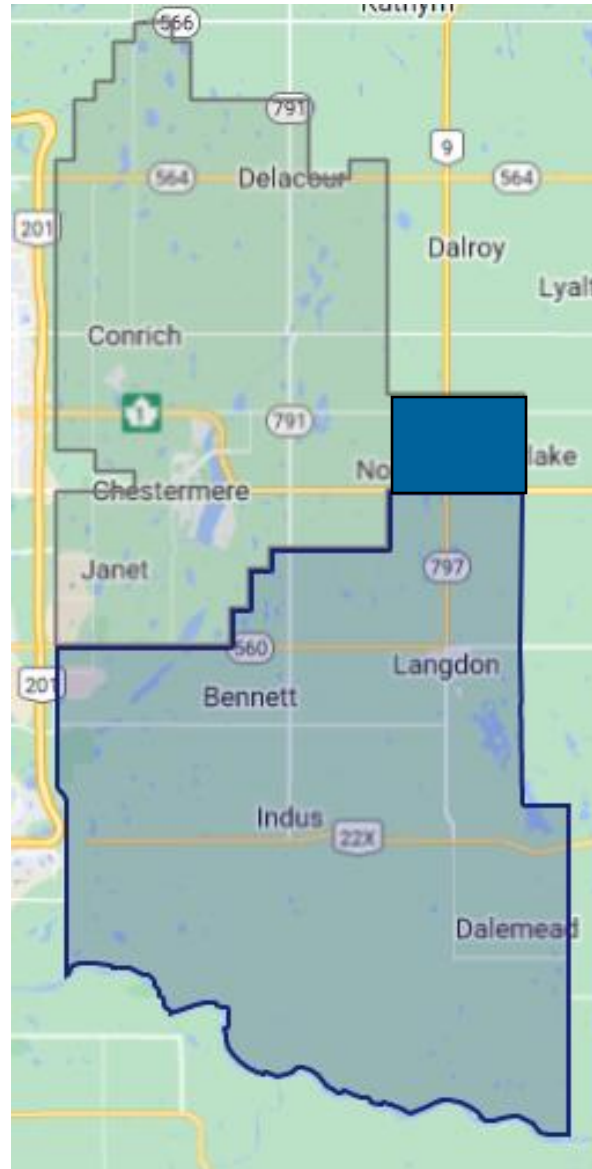
Area now designated to the Calgary Board of Education



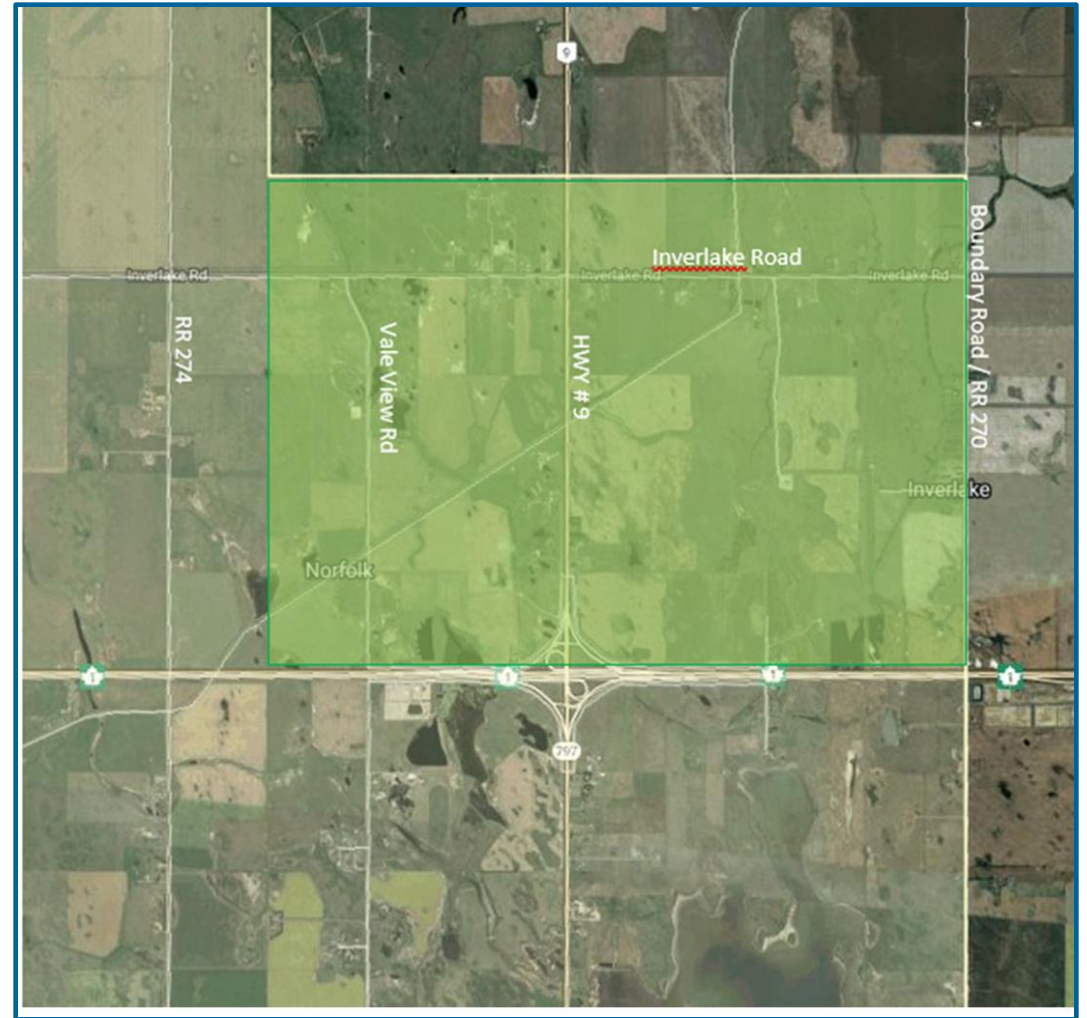
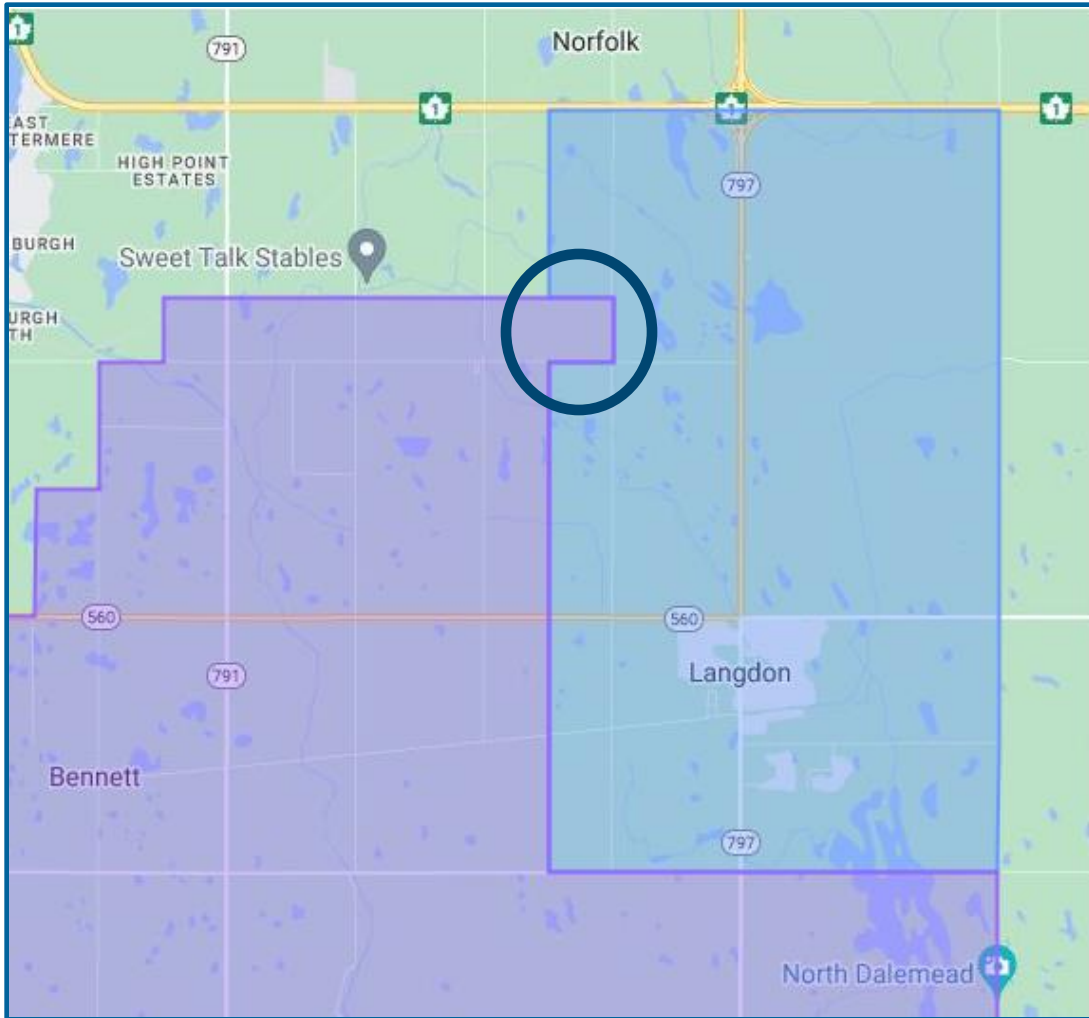
-  Chestermere High School
-  New Langdon Jr/Sr High School

# Attendance Area Changes

Students in these areas will be designated to Langdon School and the new school allowing for efficiencies in transportation



# A Closer Look



# Next Steps

Written feedback  
accepted through  
Nov. 13  
via RVSEngage

Scan to visit RVSEngage



## RVS ENGAGE

Your voice matters!

RVS uses many methods to collect your input and feedback and we strive to make it as easy and accessible for you as possible. While it's not always possible for the opinions of our stakeholders to influence our decisions, when appropriate, RVS will consult with our community and consider that feedback during the decision-making process.

### Current Projects



#### Junior/Senior High School in Langdon Accommodation Plan

Rocky View Schools (RVS) welcomes your input as we determine the grade configuration and design...

Engage Now



#### Balancing Airdrie Student Spaces

Rocky View Schools welcomes your input as we consider possible solutions to address ongoing rapid...

Engage Now

- **Delegations to the Board of Trustees: Nov. 16, 2023**
  - RVS Education Centre  
2651 Chinook Winds Dr., Airdrie, T4B 0B4  
Purpose: Provide an opportunity for stakeholders to make a presentation to the Board of Trustees at its public meeting [Policy 7 Board Operations (Section 9)].
  - Requests to present must be received by noon on Nov. 9, 2023.
- **Decision by the Board of Trustees: Dec. 14, 2023**
  - The Board will consider the accommodation plan for the school in Langdon at its public meeting on Dec. 14 (subject to change). A notice will be issued to all stakeholders regarding any decision following the public meeting.

## Classroom Chat

1. Which option do you support the most?
2. Which option is your least preferred?
3. Do you support a phased in grade configuration with the new school opening as Grade 11 in Sept. 2024 and growing to Grade 12 students in Sept. 2025?
4. What else do you want RVS to know?



**Thank You!**